

# 67P/Churyumov-Gerasimenko

14 July 2014  
Rot = 0 deg

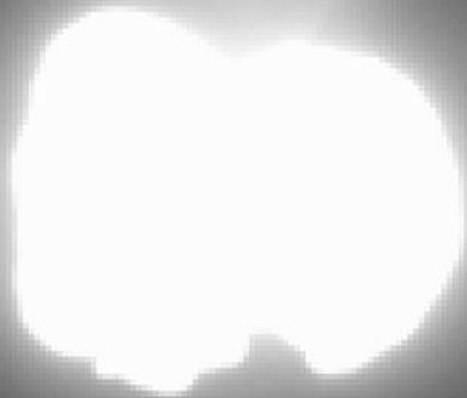


5 km

---

**Environ 2 tours par jour**

# 67P/Churyumov-Gerasimenko



# 67P/Churyumov-Gerasimenko

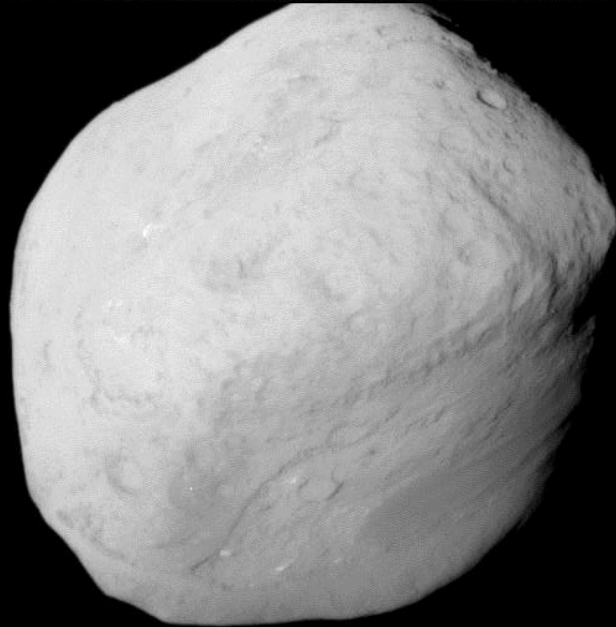
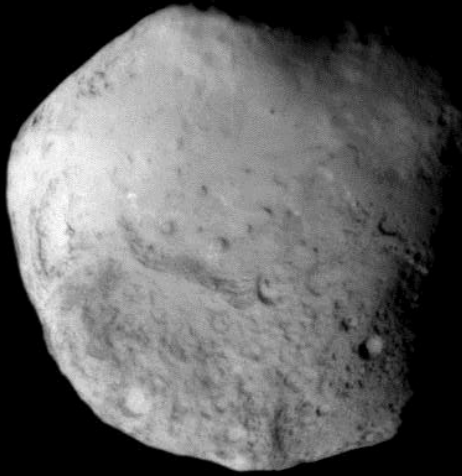


2 km

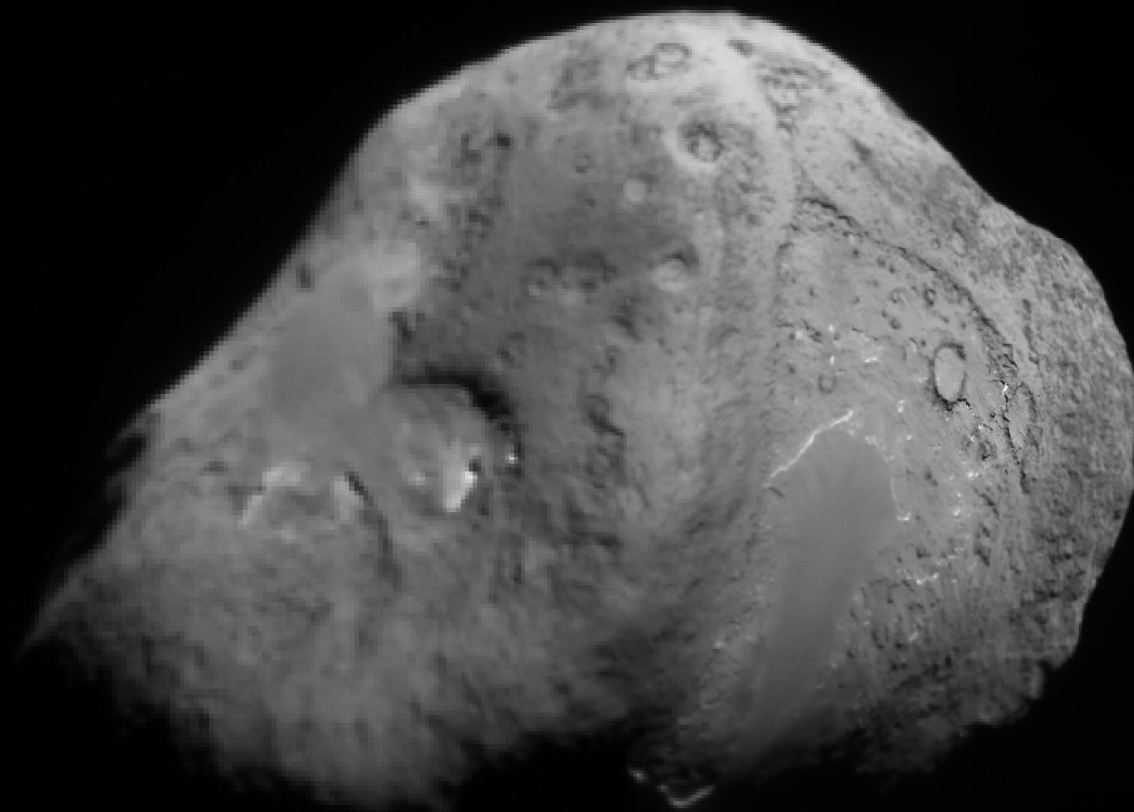
---



**Temple 1**  
**5 x 7 km**

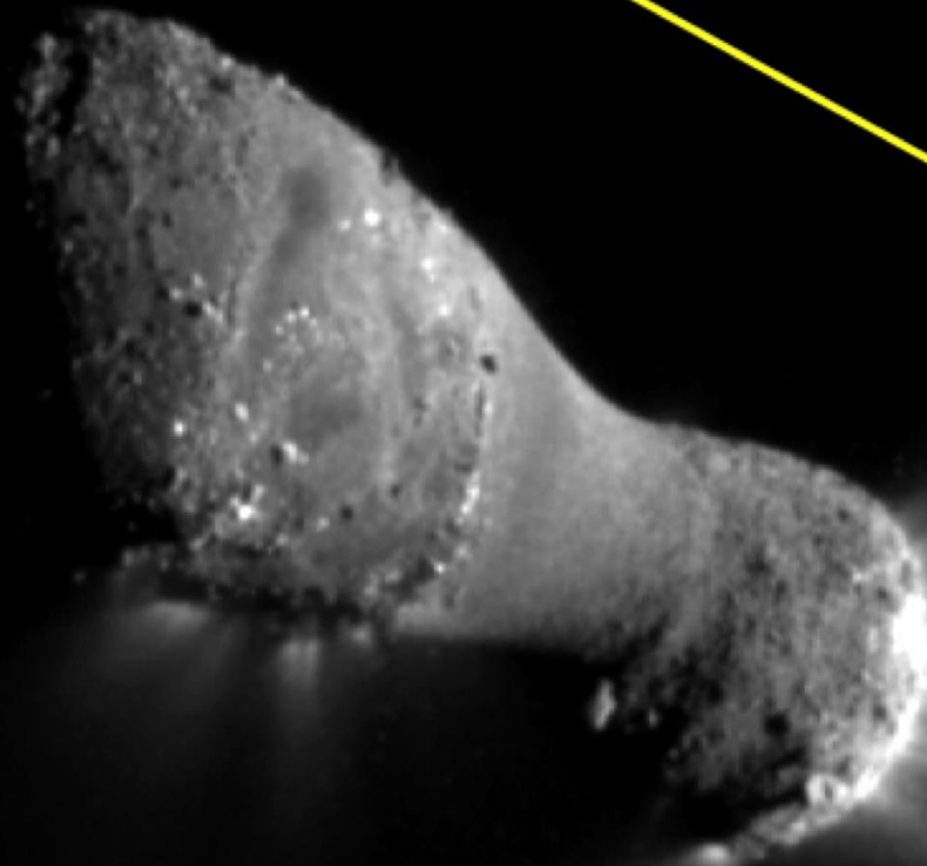


**Temple 1**  
**5 x 7 km**

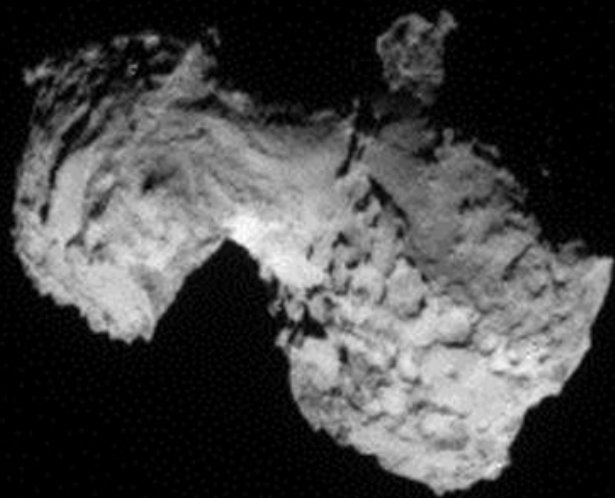


**Hartley 2**

**2.0 km**



# 67P/Churyumov-Gerasimenko



# 67P/Churyumov-Gerasimenko

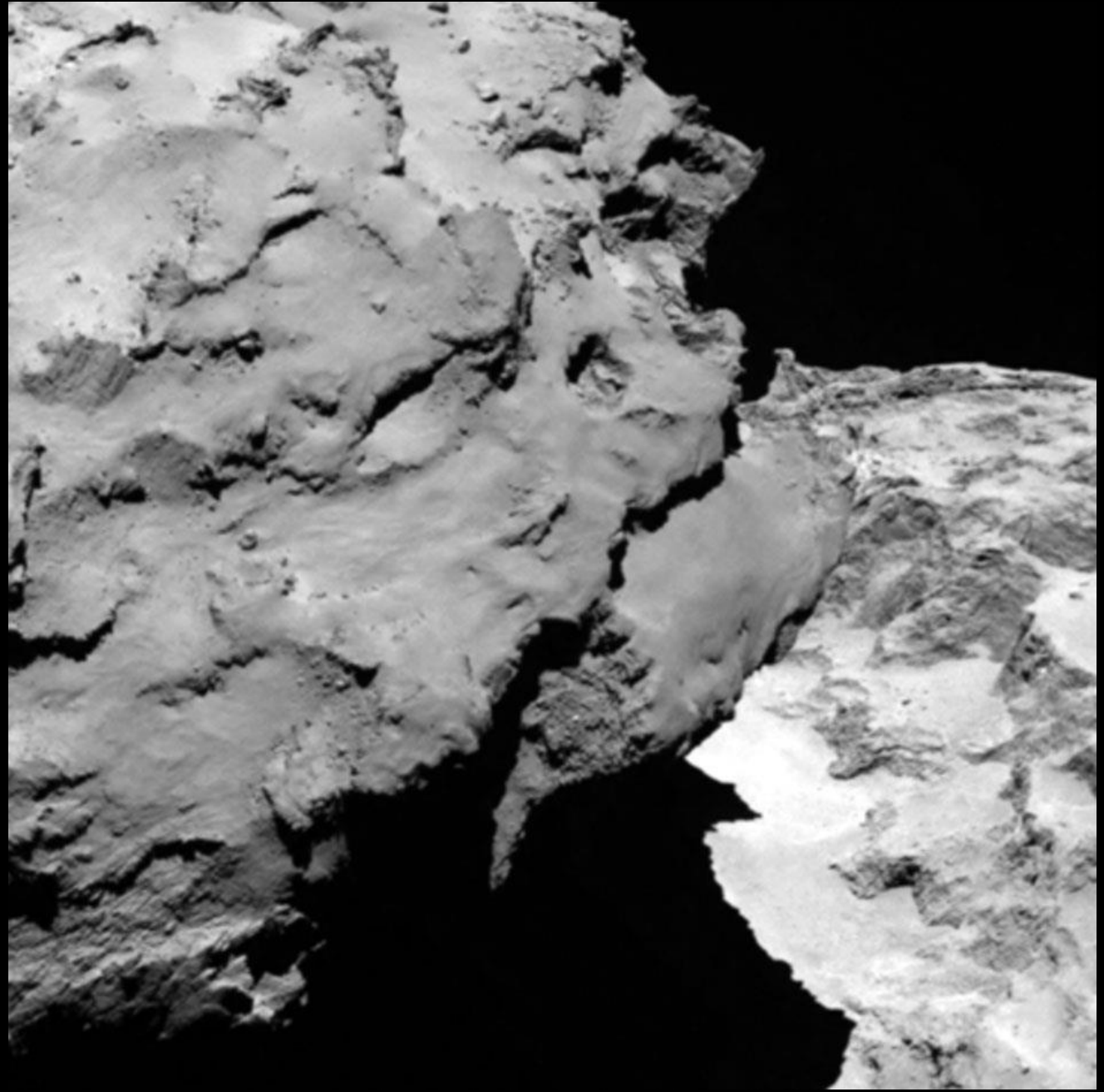




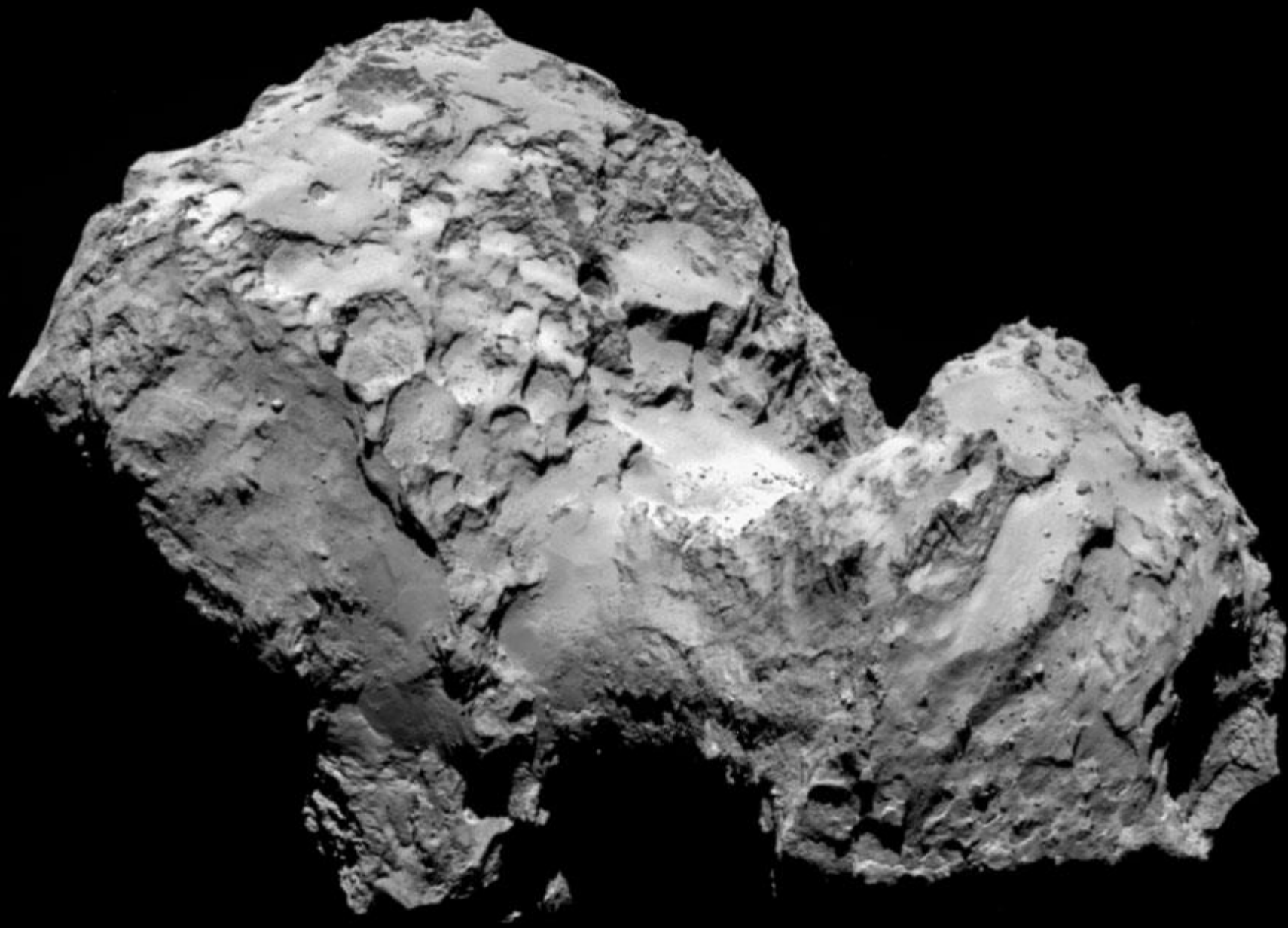
# 67P/Churyumov-Gerasimenko



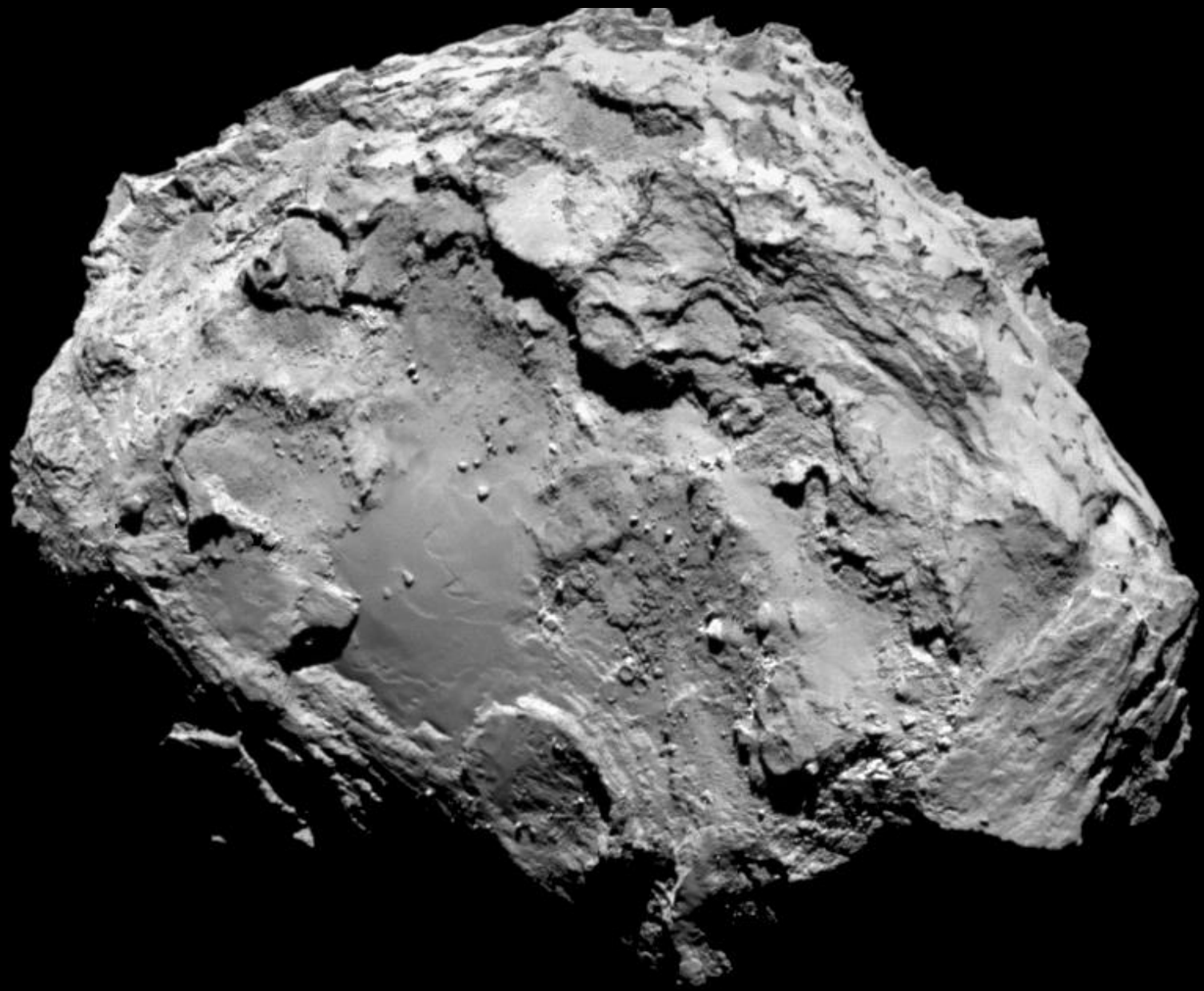
# 67P/Churyumov-Gerasimenko

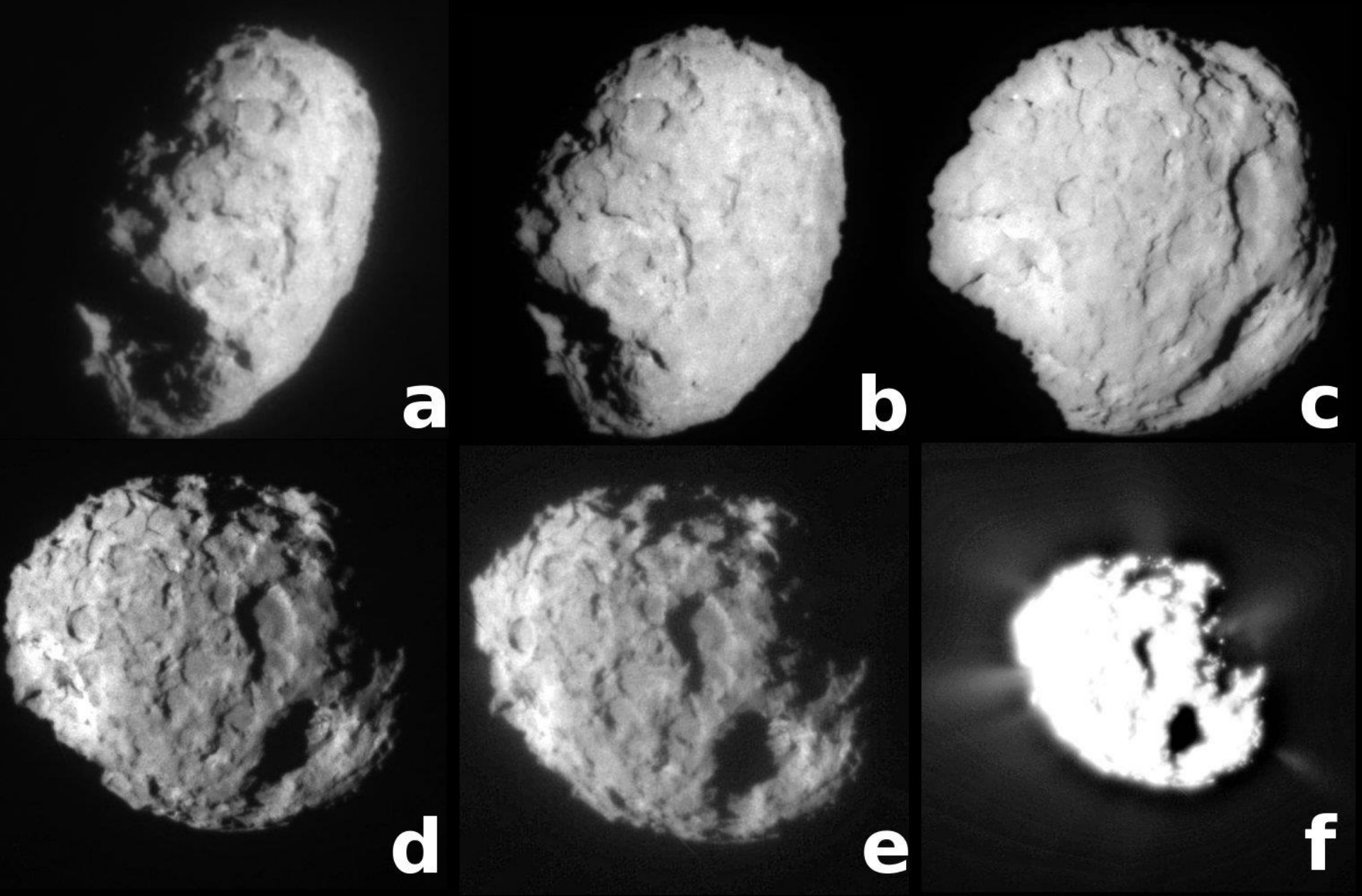


# 67P/Churyumov-Gerasimenko



# 67P/Churyumov-Gerasimenko





**Wild 2 ( $\varnothing = 5$  km)**



**Wild 2 ( $\emptyset = 5$  km)**

## Wild 2 surface $\neq$ asteroid or satellite surfaces



Wild 2

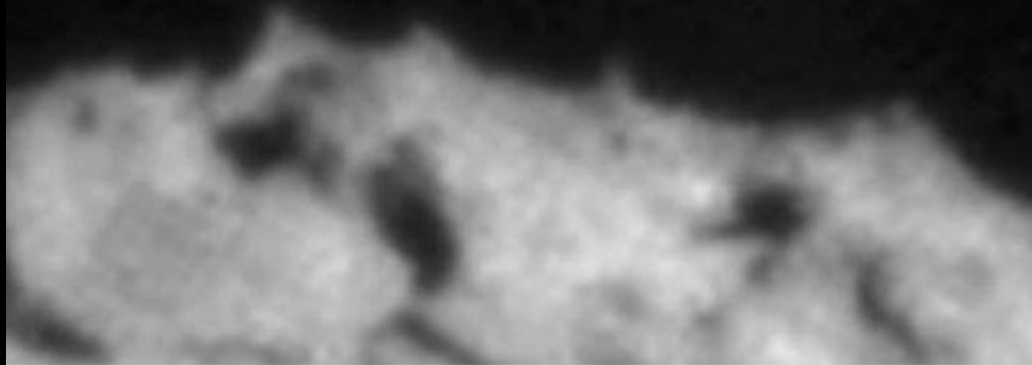


Ida

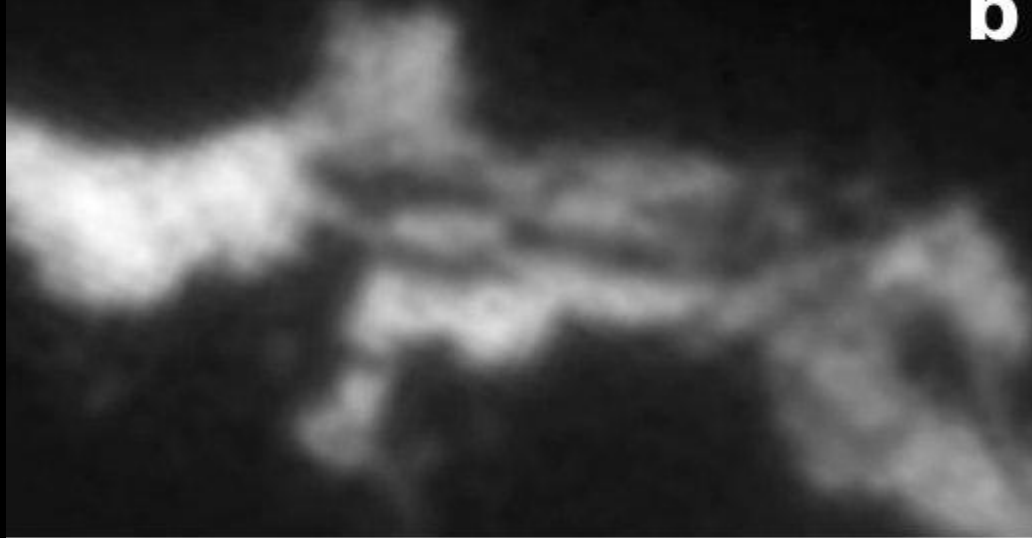


Dactyl

**a**



**b**



**c**



**Wild 2 ( $\emptyset = 5$  km)**

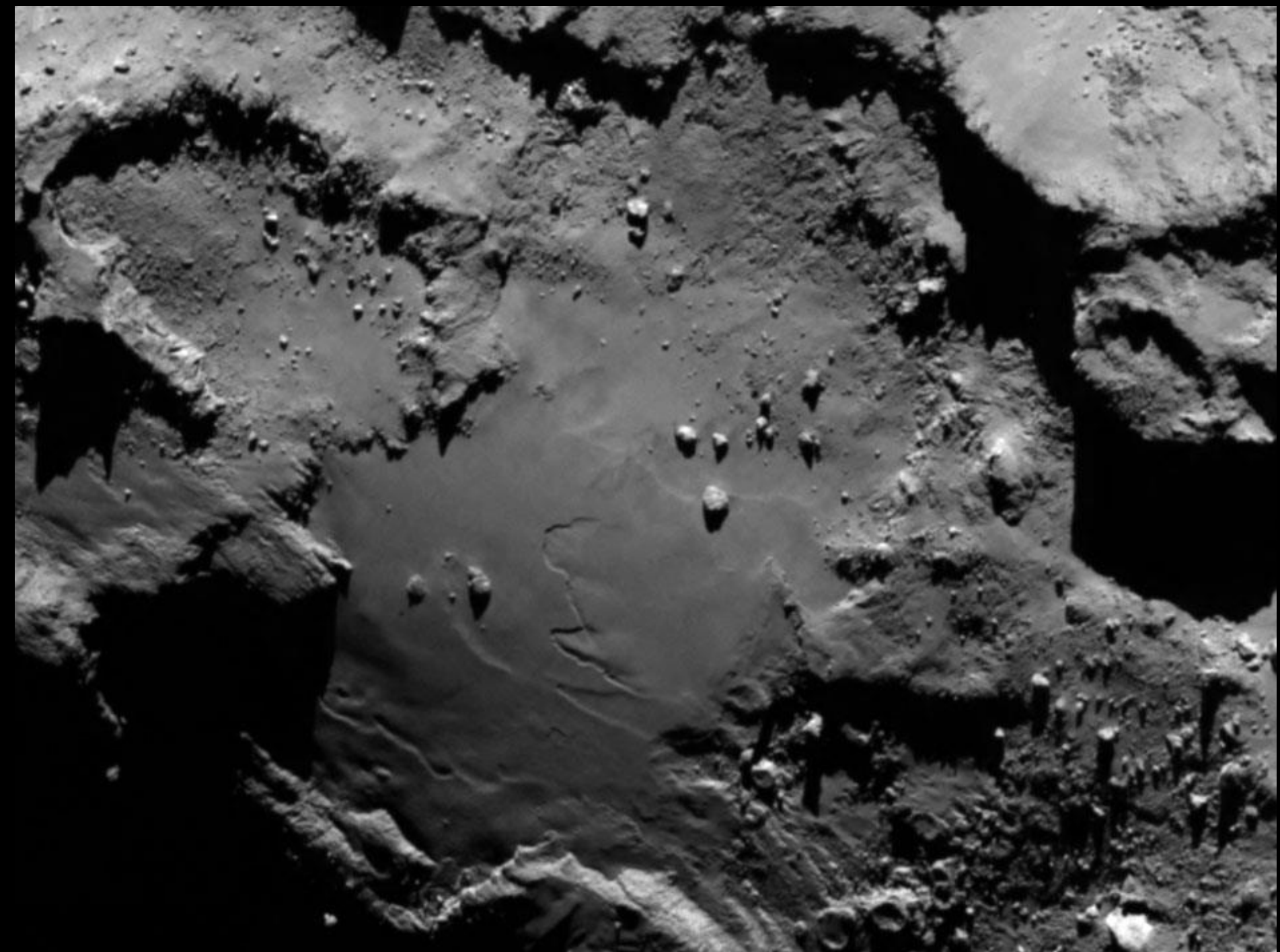




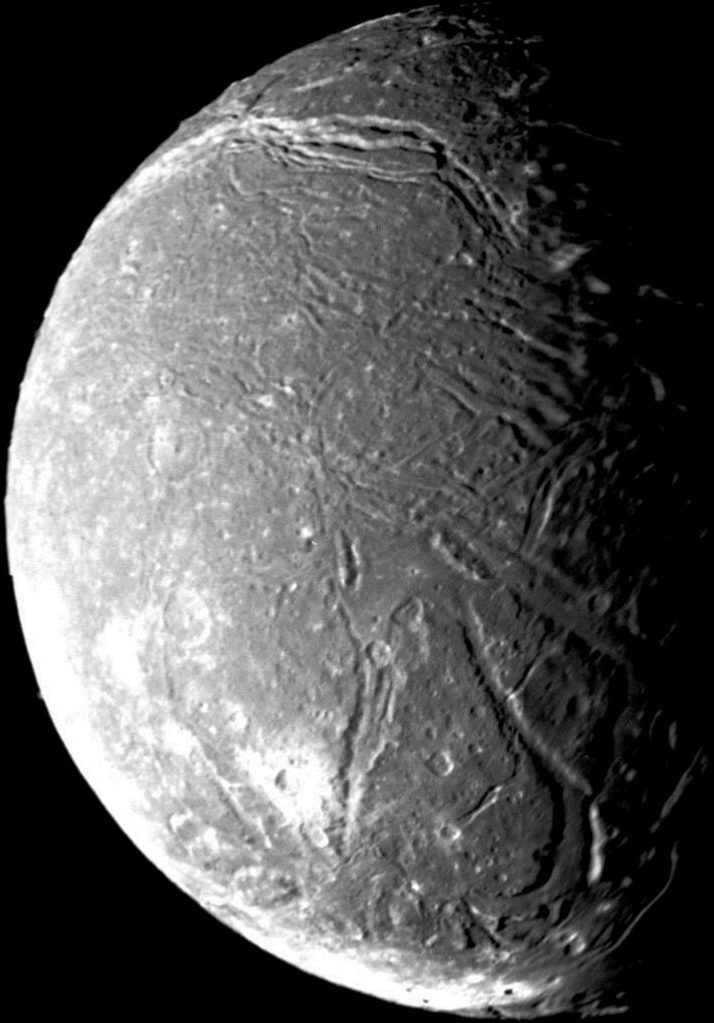




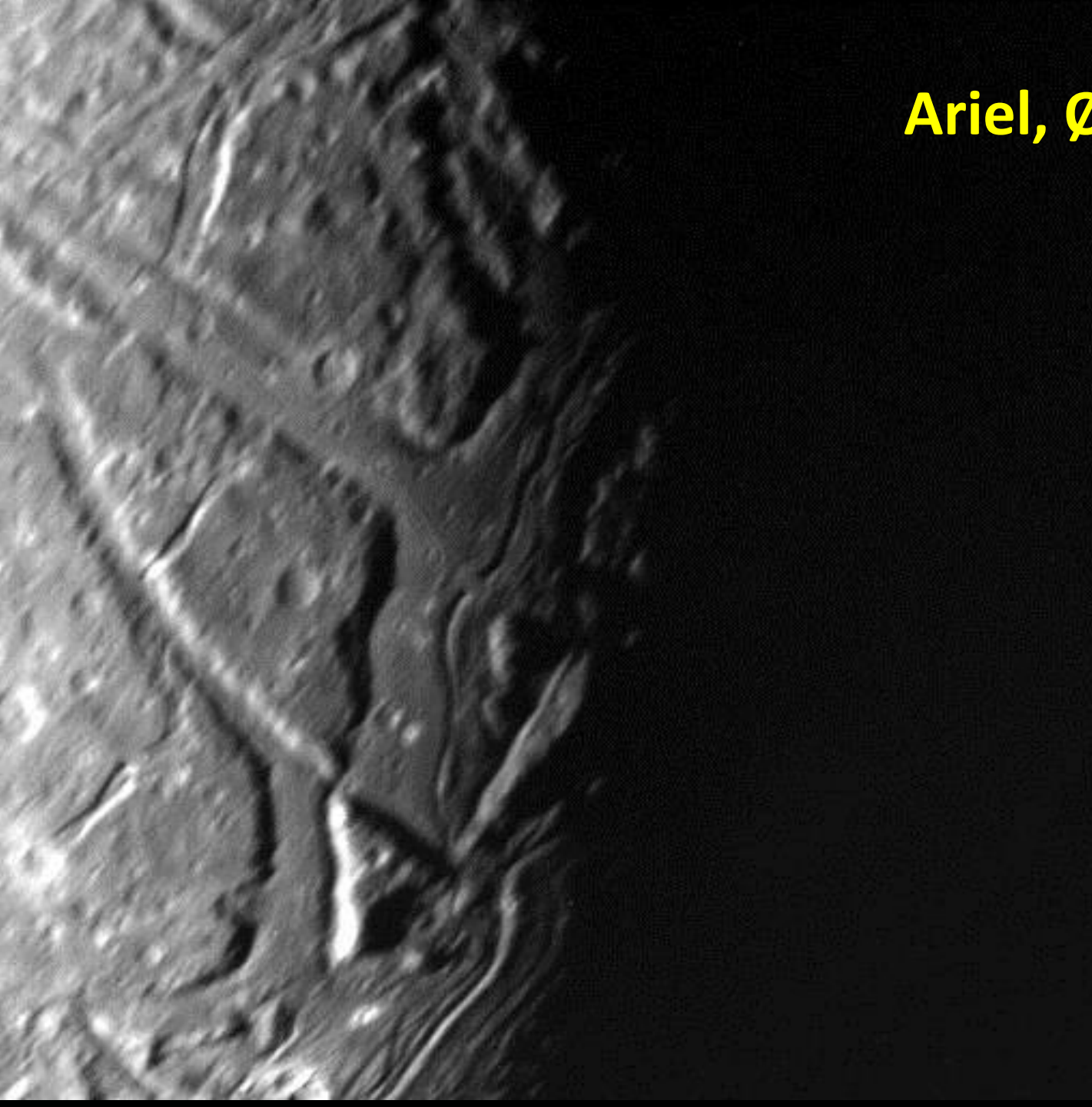




**Ariel,  $\varnothing = 1200$  km)**



**Ariel,  $\varnothing = 1200$  km)**





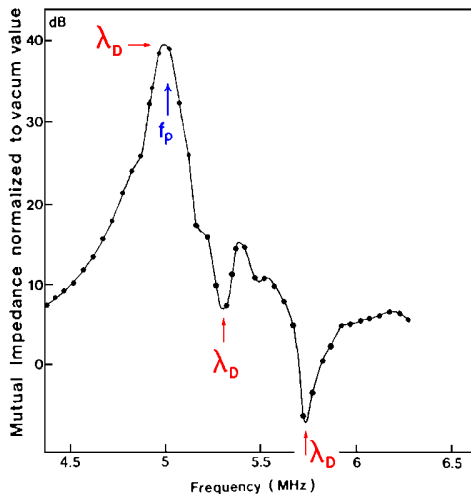
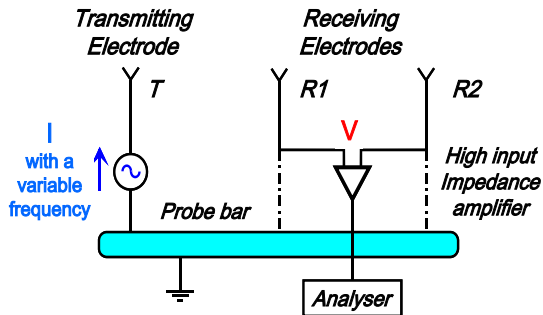


# RPC-MIP (Sonde à Impédance Mutuelle)

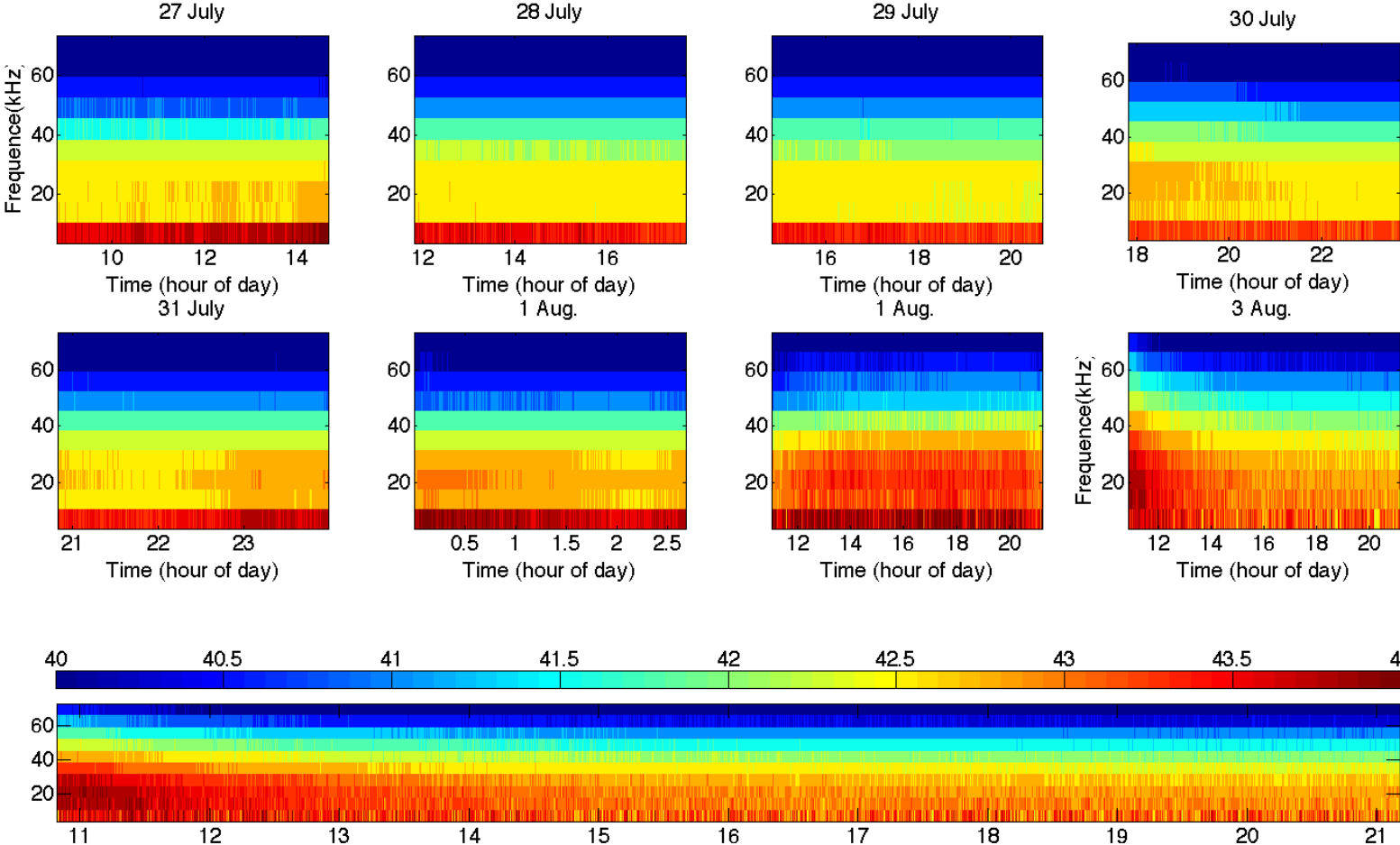
Objectif: mesure de la densité et température du **plasma** dans la coma.

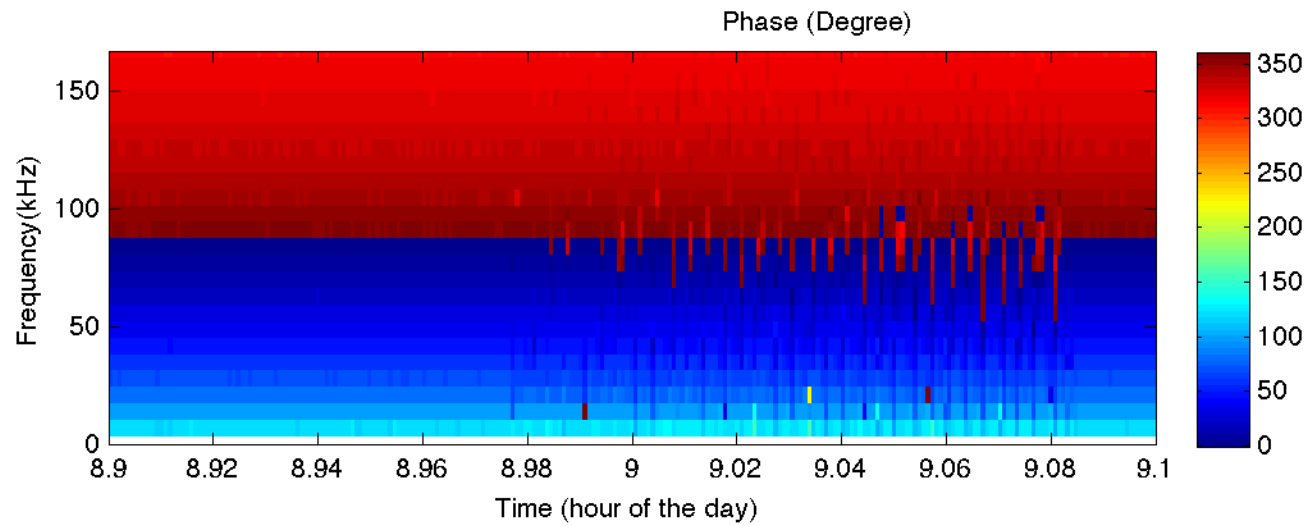
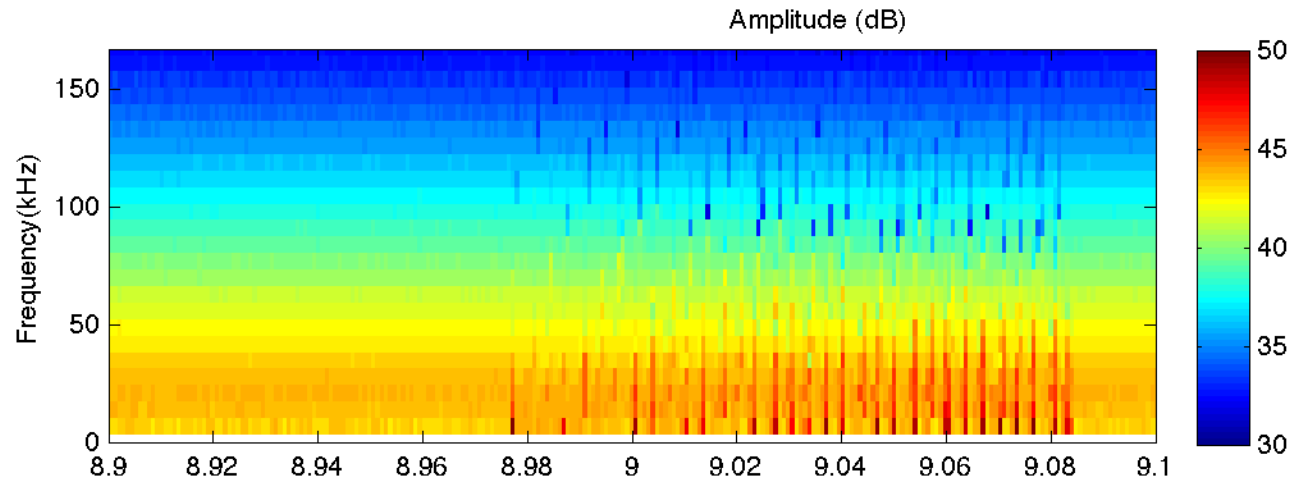
L'instrument comprend:

- Une antenne comprenant 2 électrodes émettrices et 2 électrodes réceptrices montées sur un barreau de 1m de long
- Un boîtier électronique pour le gestion de l'instrument, la collecte et le traitement du signal des antennes dans la gamme 7 kHz-3.5 MHz;

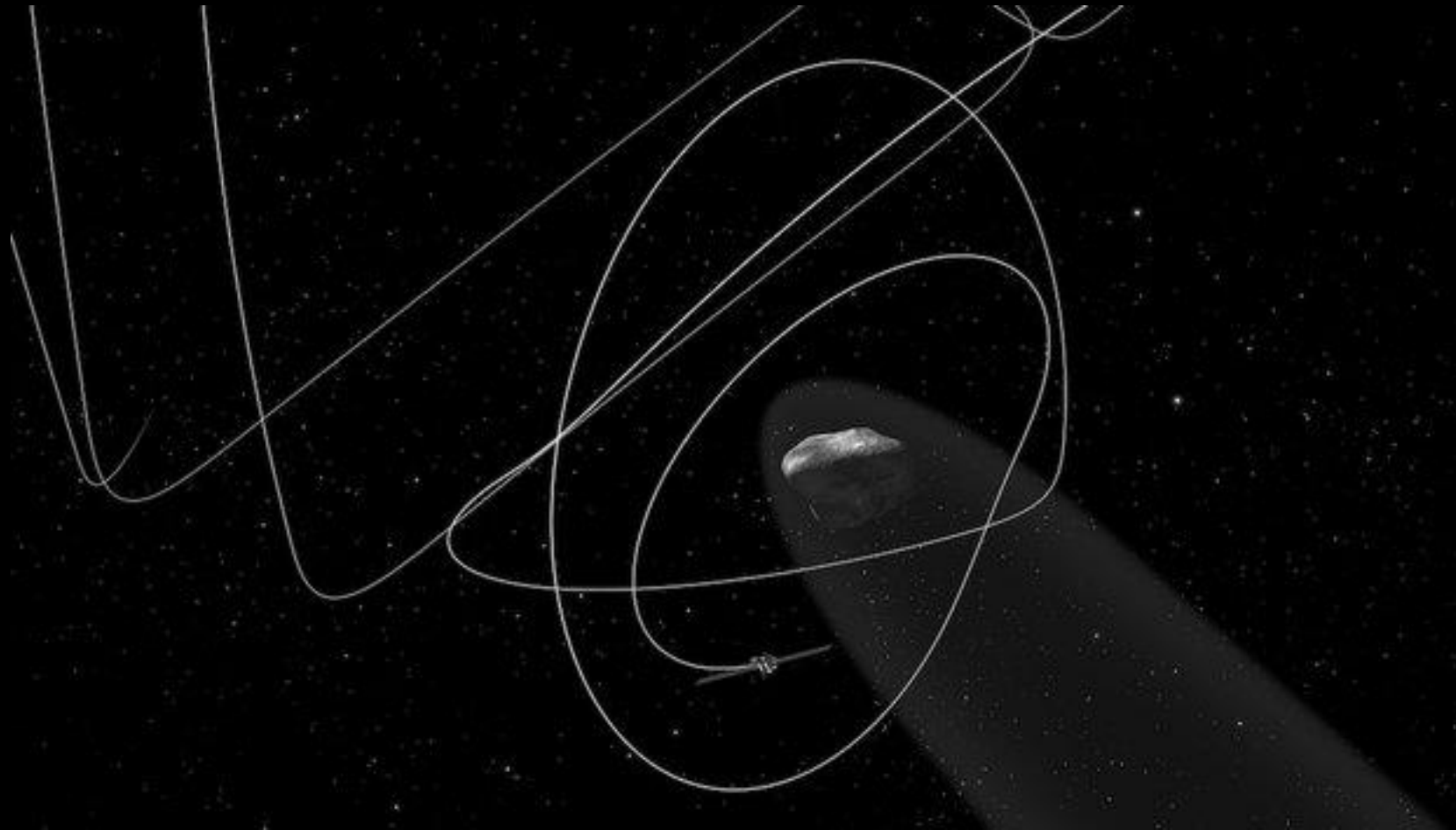


# Coma de 67P/C-G sous la surveillance de MIP





**Août 2014 à novembre 2014**  
**approche de 100 à 30 km et mise en orbite autour du noyau**



**Août 2014 à novembre 2014**  
**approche de 100 à 30 km et mise en orbite autour du noyau**

