

AOÛT 2017  
ATTRACTION ET RÉPULSION

# Hédonisme du Pifomètre

Michael Moisseeff  
ASQUALI  
SCULPTEUR D'ARÔME



**Asquali**  
Sculpteurs d'Arômes

**L'EXPLORARÔME**

Association Asquali, Culture Olfactive  
L'Explorarôme  
31540 MONTÉGUT LAURAGAIS  
T : 05 62 18 53 00 FX : 05 61 83 66 34  
asquali@club-internet.fr



















# THE CHEMISTRY OF THE SMELL OF DECOMPOSITION

## THE STAGES OF DECOMPOSITION

1

*Fresh*

2

*Bloated*

3

*Active Decay*

4

*Advanced Decay*

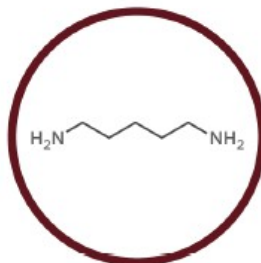
**1. Fresh Stage:** begins almost immediately; enzymatic breakdown of cells & tissue (autolysis) begins. Visible signs limited. **2. Bloated Stage:** metabolic activity of bacteria produces gases, causing the carcass to inflate & swell. Pressure forces fluids from natural orifices, producing strong odours. **3. Active Decay:** liquefaction and disintegration of tissues observed. Odours persist. **4. Advanced Decay:** decomposition rate decreases due to loss of mass. Eventually, dry remains are all that remain.

## A Selection of Odour-Causing Chemicals in the Decay Process



### 400+ VOLATILE COMPOUNDS

Decomposition is a complicated process, and varies depending on conditions. A wide range of chemical compounds are produced, many more than can be shown here, though not all of them will contribute to odour.



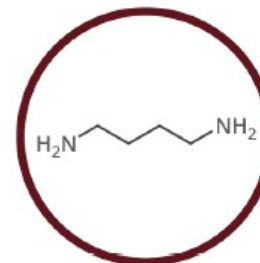
### Cadaverine

(pentane-1,5-diamine)

SMELL

**FOUL, ROTTING FLESH**

Also partly responsible for the distinctive odours of urine & semen.



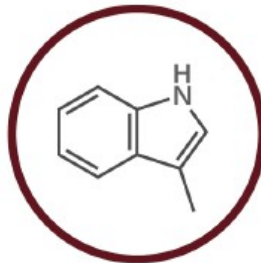
### Putrescine

(butane-1,4-diamine)

SMELL

**PUTRIFIED FLESH, GARBAGE**

Along with cadaverine, putrescine also contributes to bad breath.



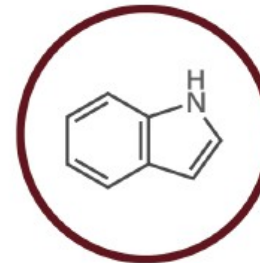
### Skatole

(3-methylindole)

SMELL

**STRONG FAECAL ODOUR**

Also found in human faeces. Has a flowery smell at low concentrations.



### Indole

(indole)

SMELL

**PUNGENT, MUSTY, STALE**

Like skatole, occurs in faeces, but used in low concentrations in flower scents & perfumes.

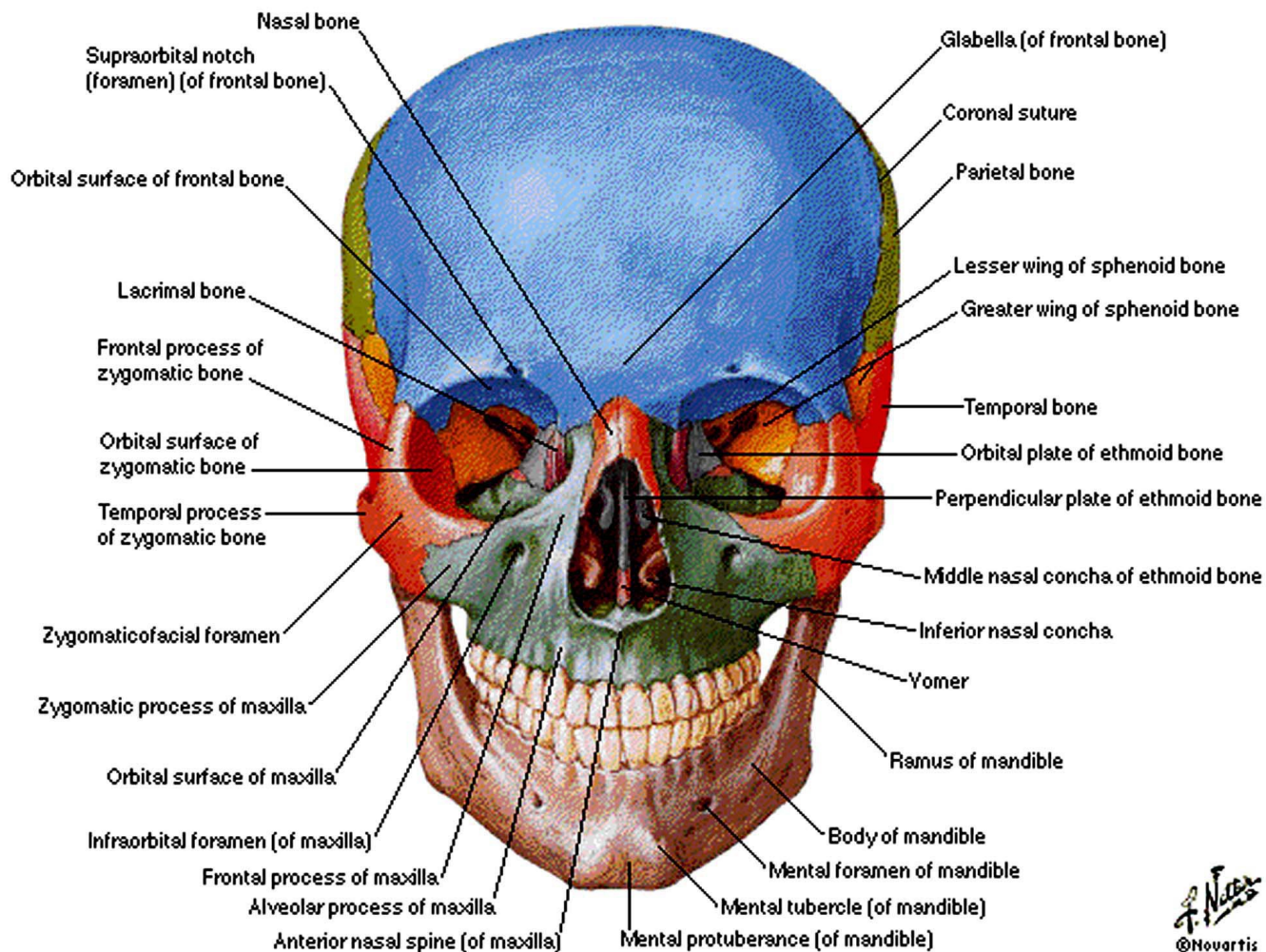






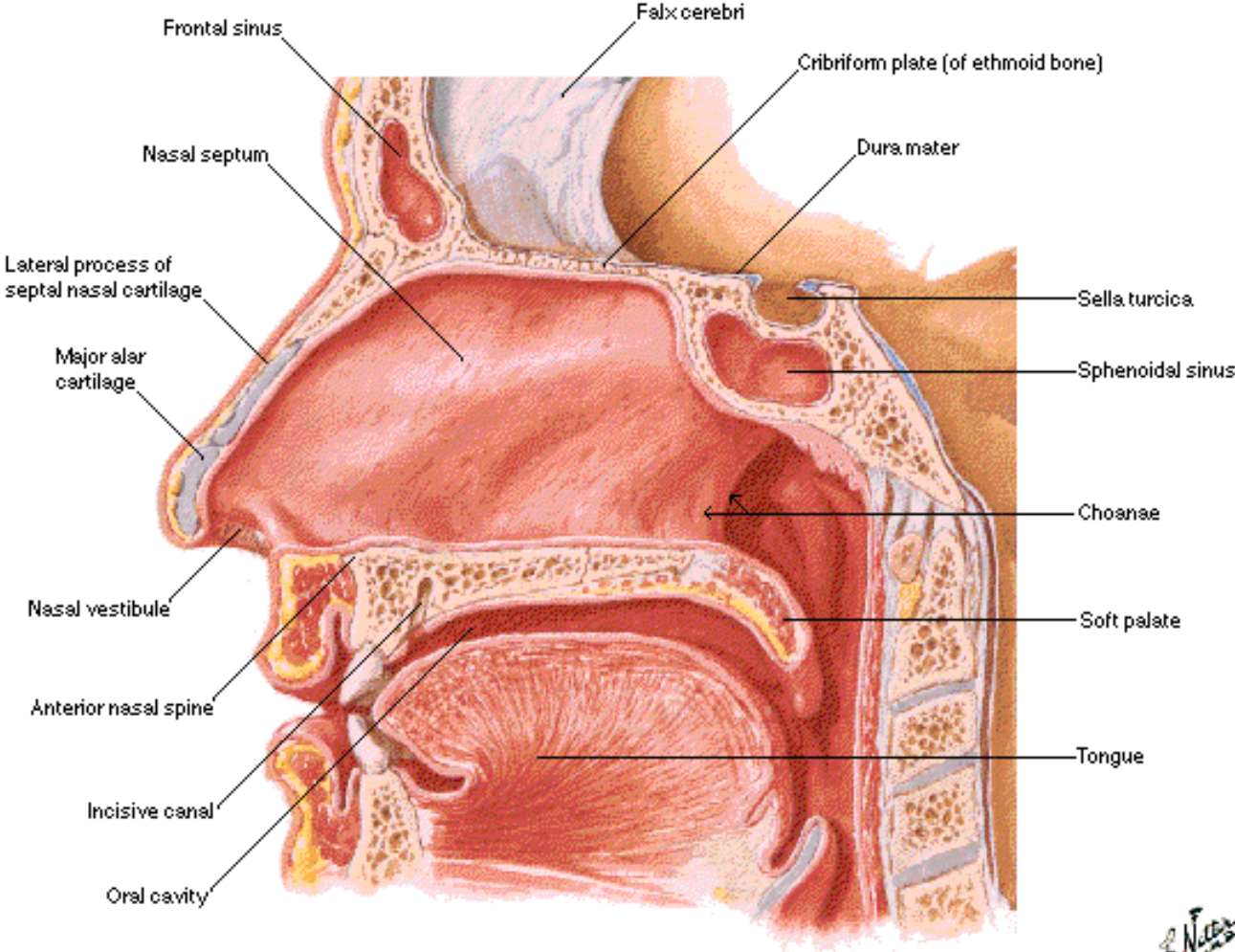
# Skull

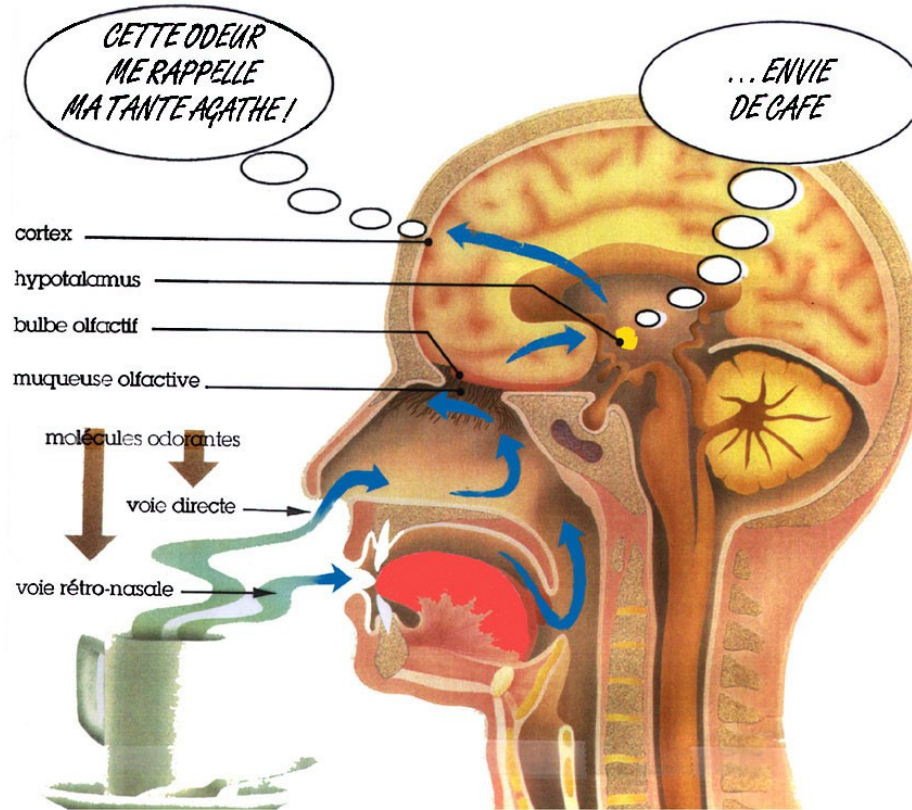
## Anterior View





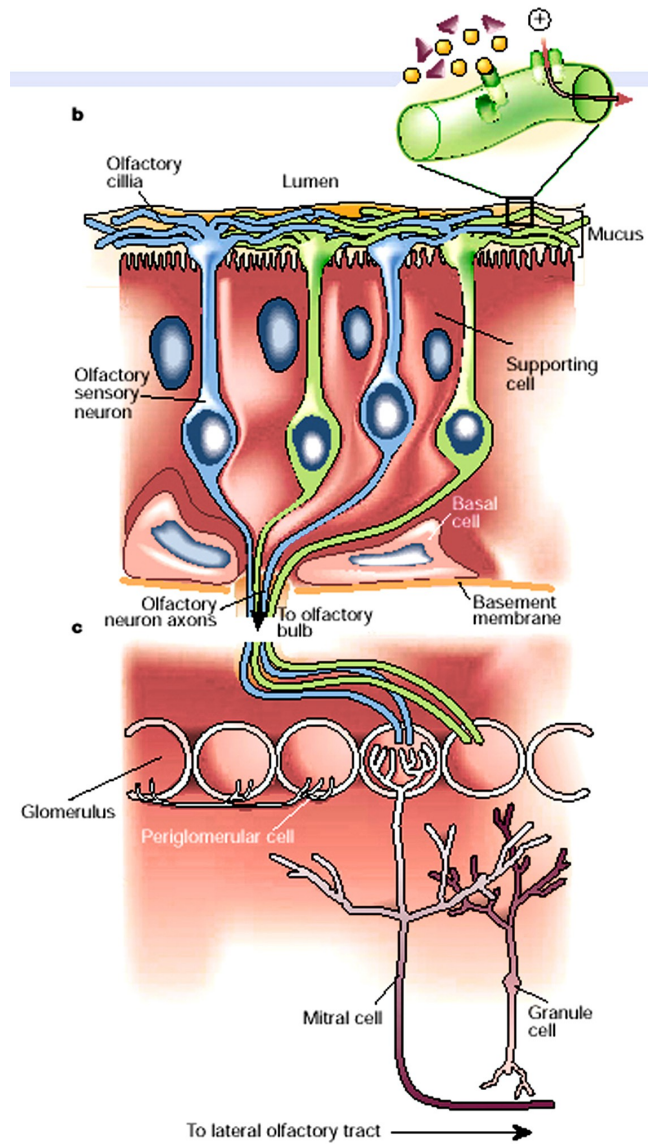
# Medial Nasal Wall [Septum]





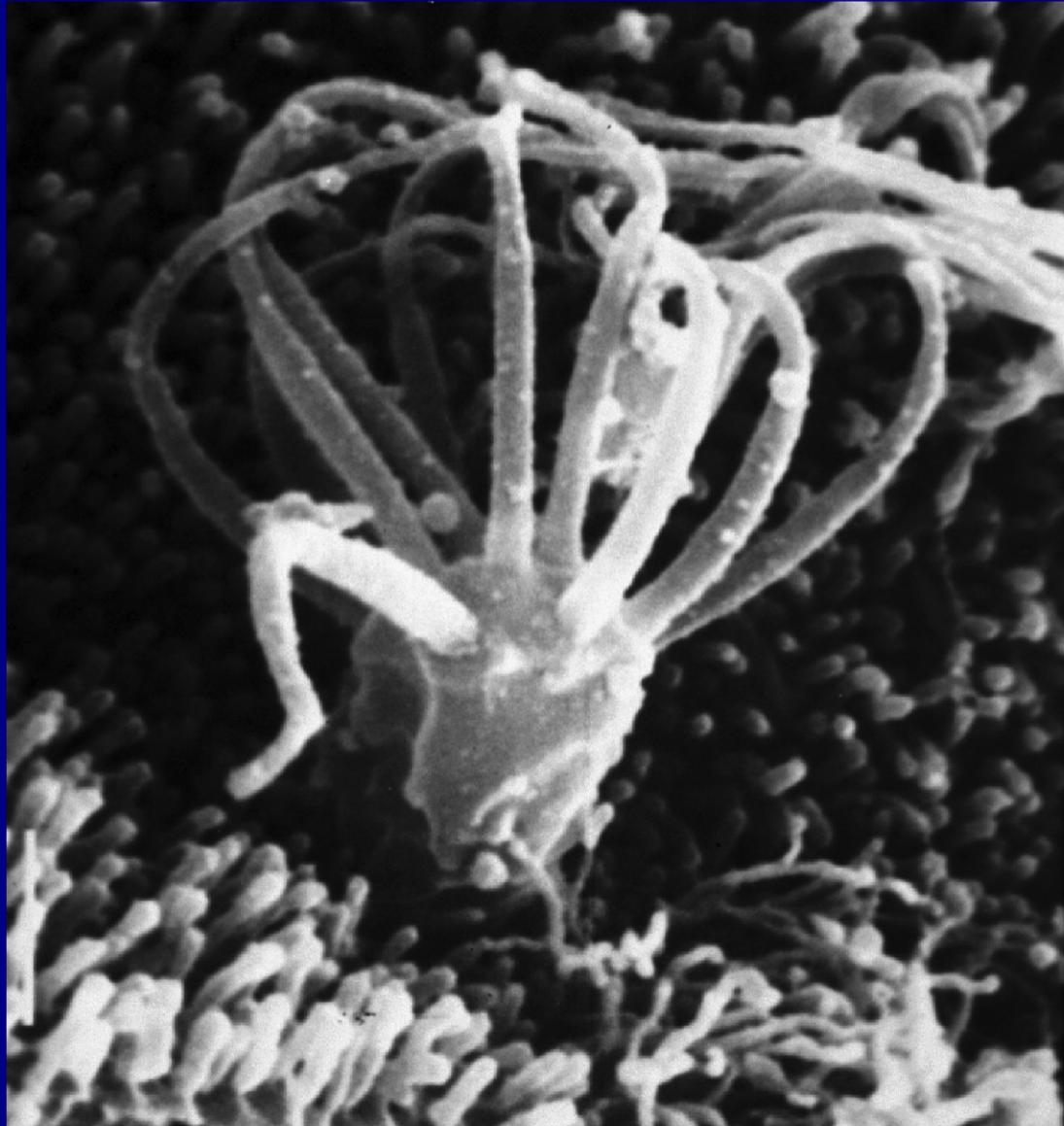
## LA NEUROPHYSIOLOGIE DE L'OLFACTION

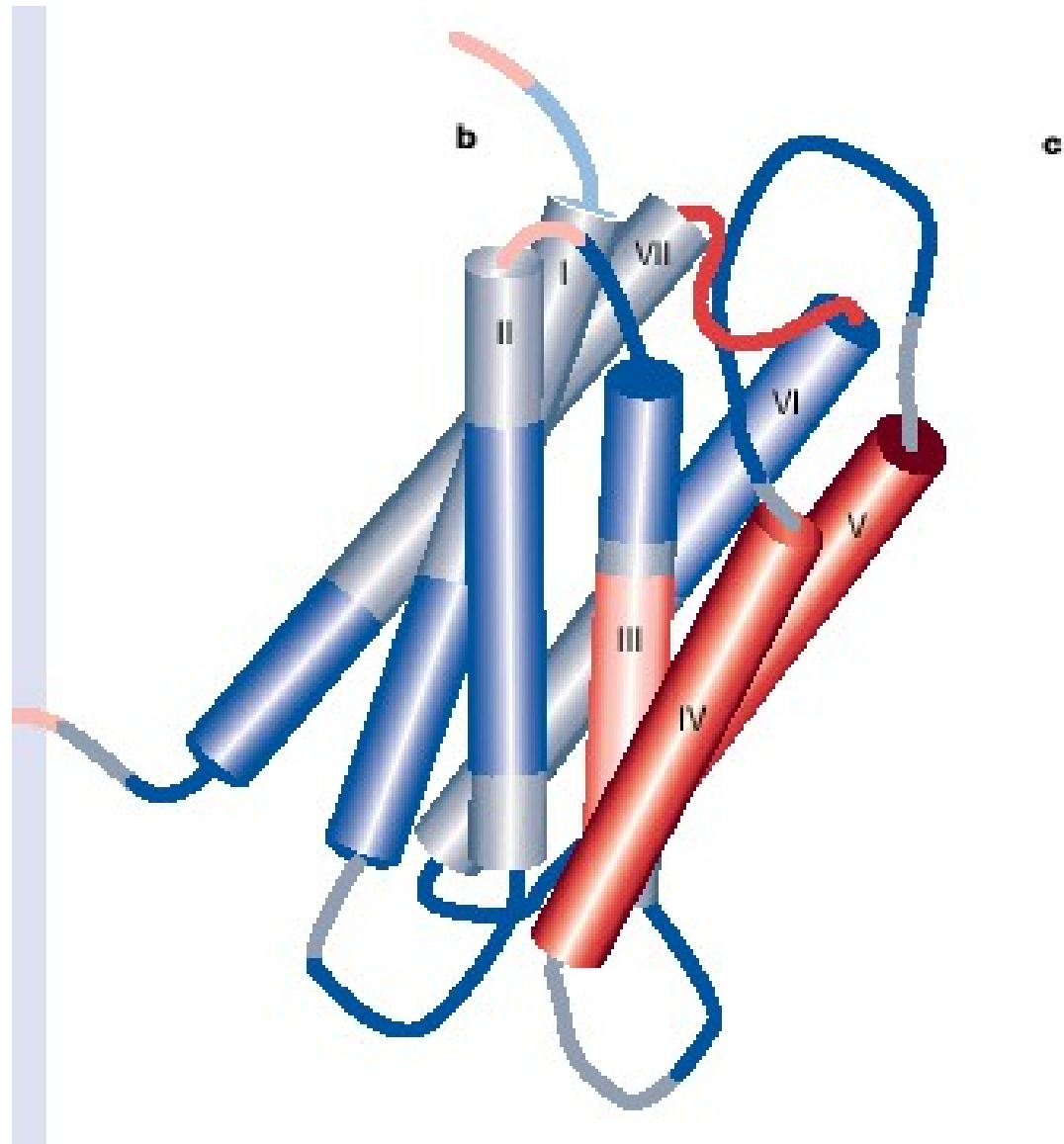
Influence des odeurs sur le comportement (hypothalamus), la mémoire (cortex) et le goût (voie retro-nasale)



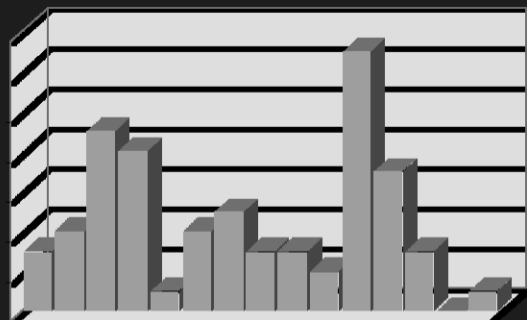


# NEURORECEPTEUR OLFACTIF HUMAIN

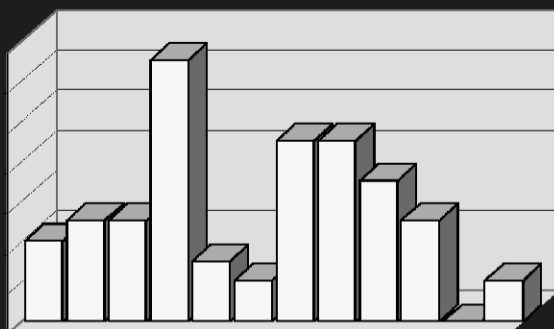




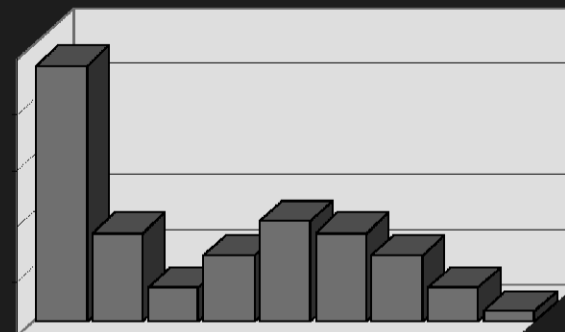
# SEUILS DE DETECTION



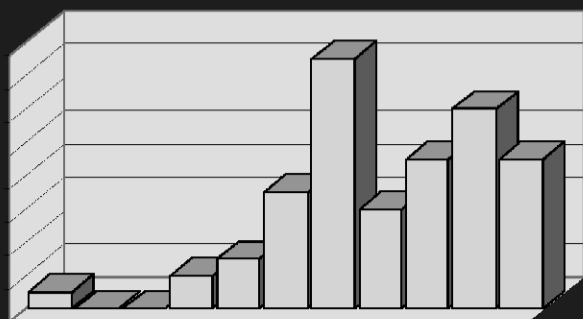
Péménone n=66



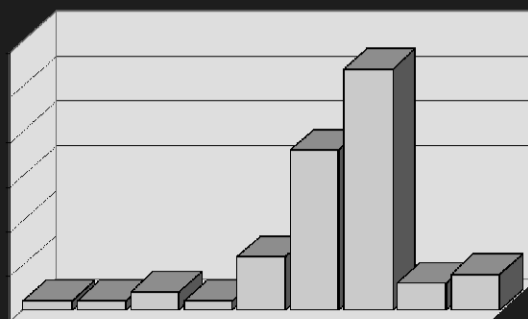
acide phényléthylique n=64



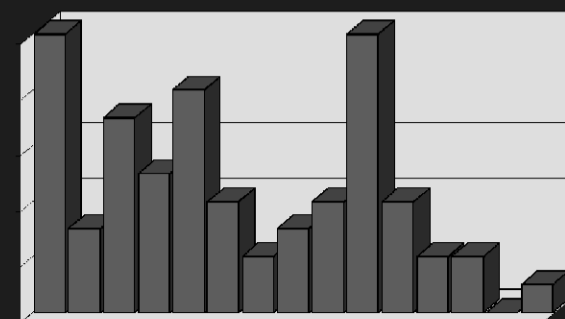
androsténone n=67



Isobutyl-méthoxy-pyrazine n=64



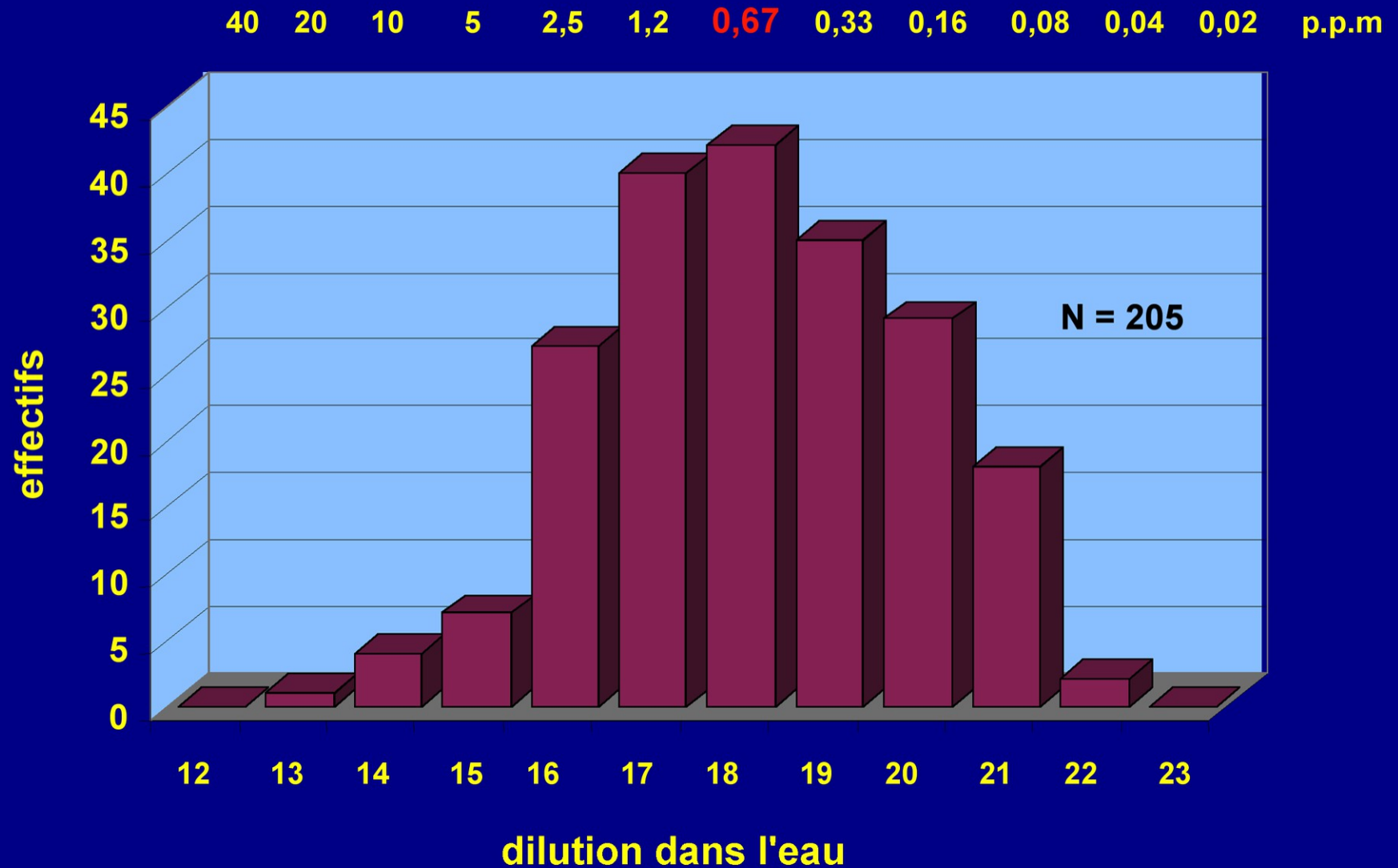
acide isovalérique n=63



citralva n=65



# SEUILS DE LA PYRIDINE

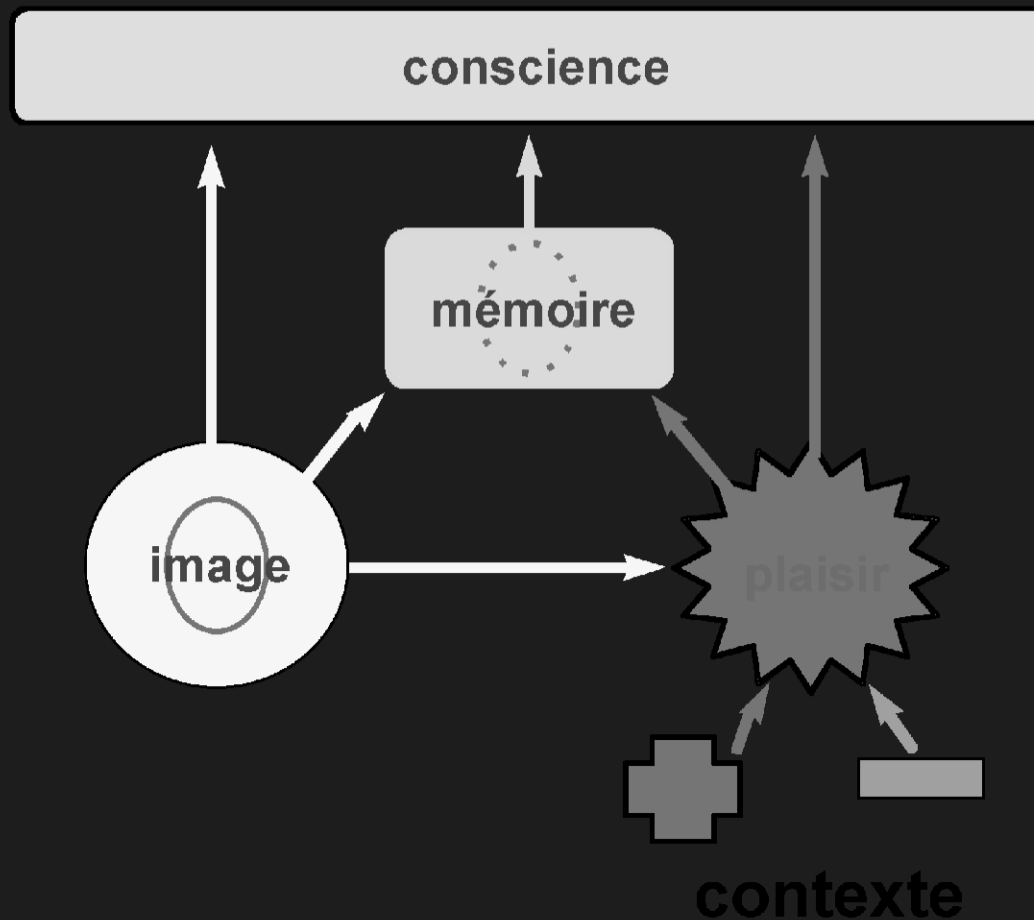








# LE MECANISME DU PLAISIR









**Avez-vous le droit  
d'enfumer vos voisins?**

















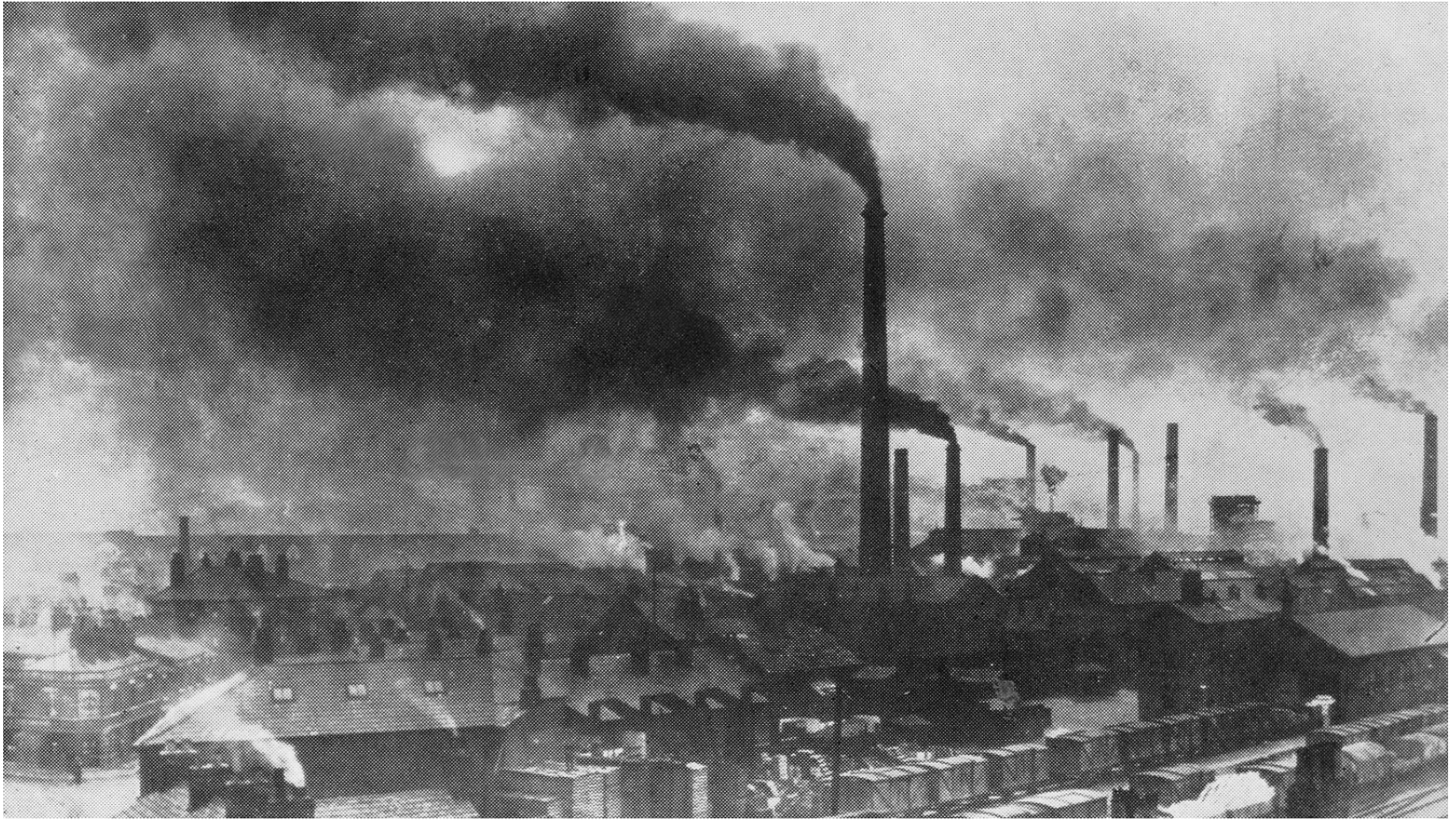


**DANGEROUS  
GASES**



































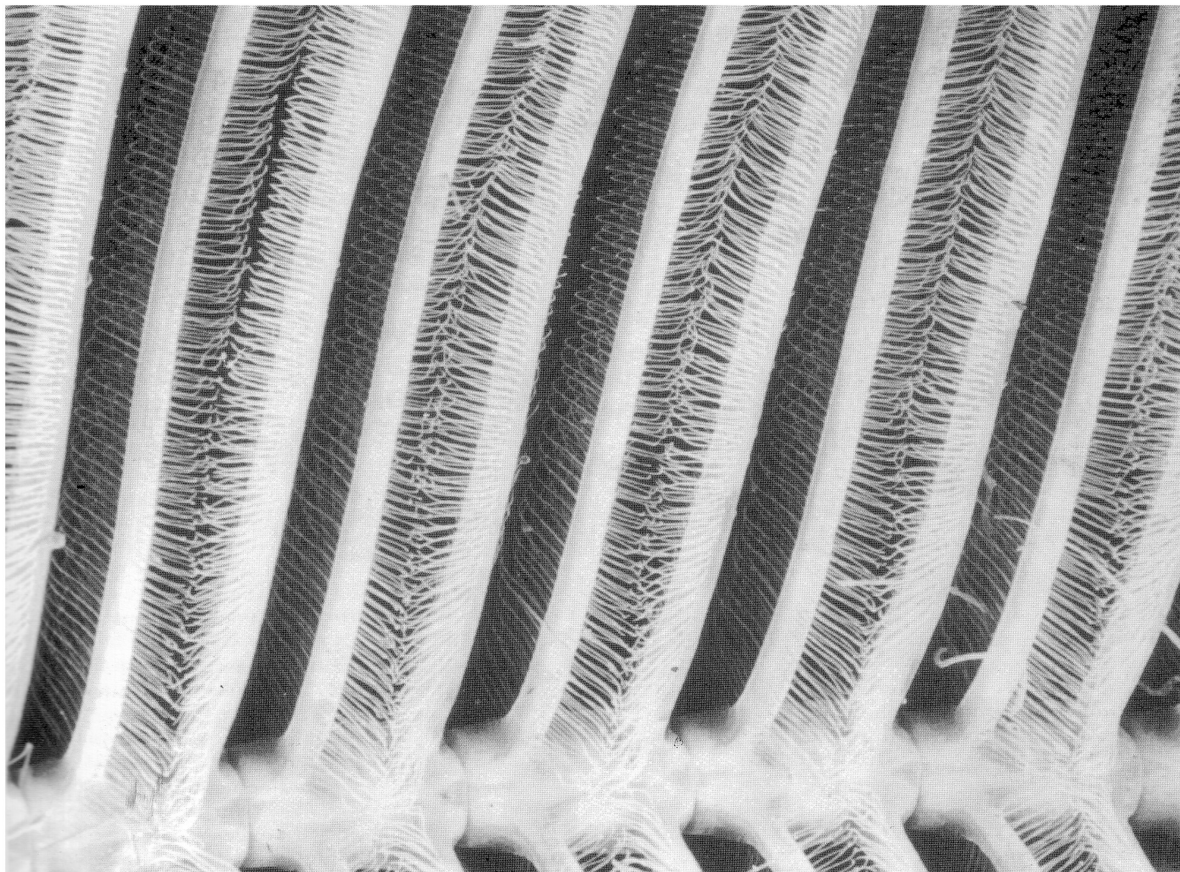


*Cinematic Microscan*

© 2000 *Kenn Wingle*



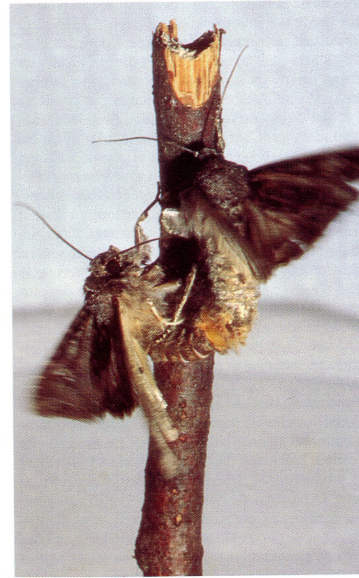
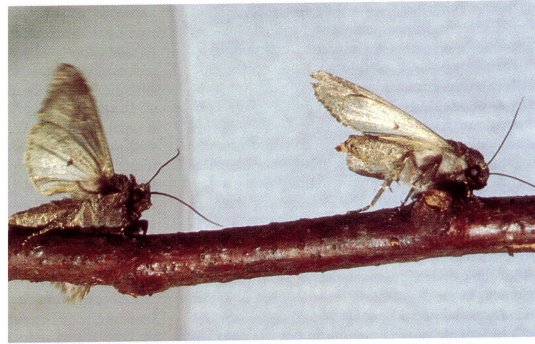




**Vue au microscope d'une antenne de mâle de papillon *Hesperidae*. On distingue clairement les sensilles olfactives dont la majeure partie ne perçoivent que la phéromone sexuelle des femelles. Cliché R. Brossut.**









Lethocerus Indicus









asquali





*Civettictis civetta*























- Avec mes sincères remerciements aux personnes suivantes dont les publications et la fréquentation ont nourri mes recherches :
- Benoist Schaal
- Sylvie Issanchou
- André Holley
- Patrick MacLeod

Restons calme, respirons gentiment  
Merci de votre attention





