

IXe Marathon des Sciences

ATTRACTION - REPULSION

05 août 2017 Fleurance

**Sociétés animales :
comment ne pas perdre
le nord ?**

François Moutou









NEOTENIE ?







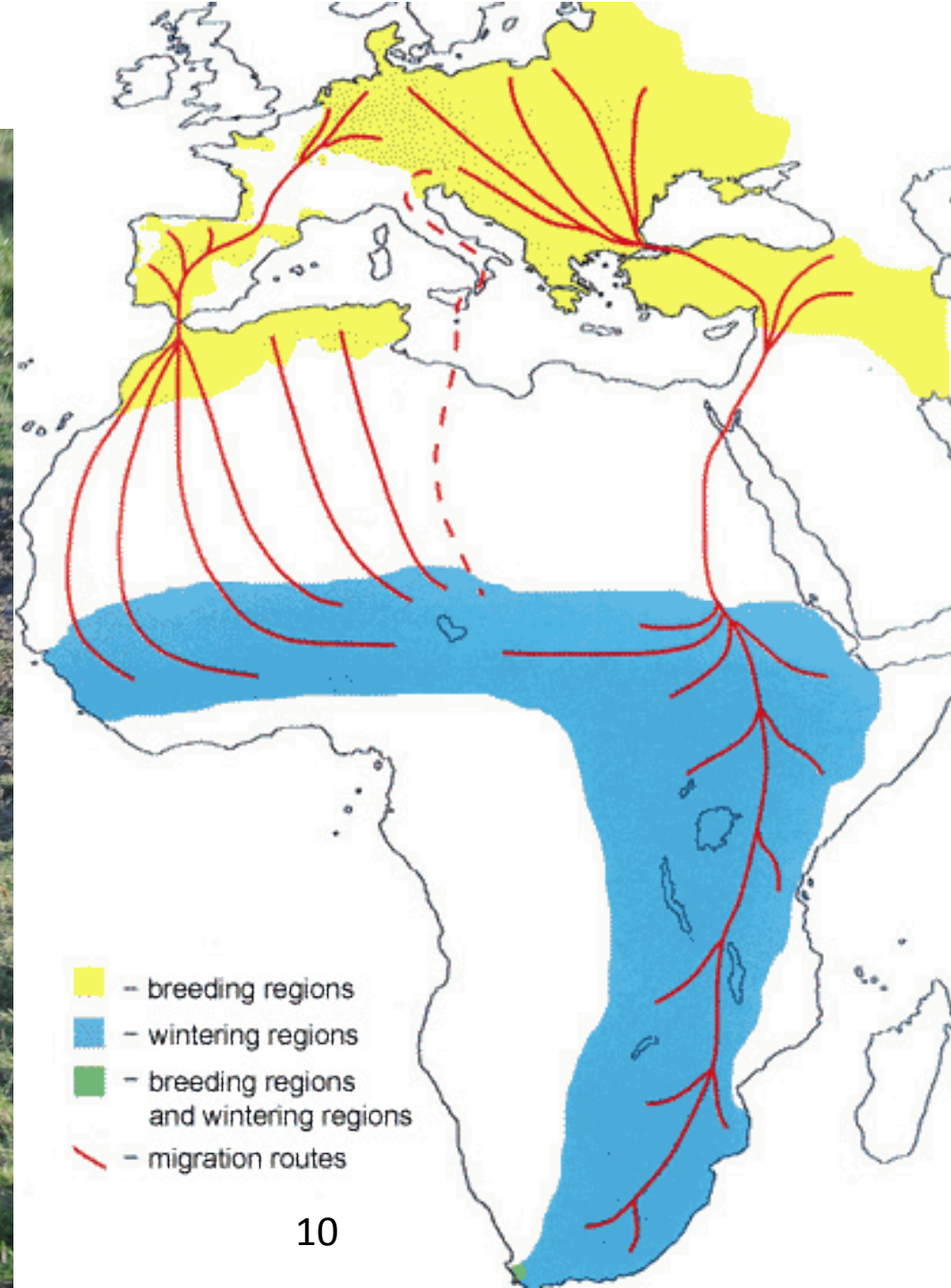
Le vilain petit canard ?





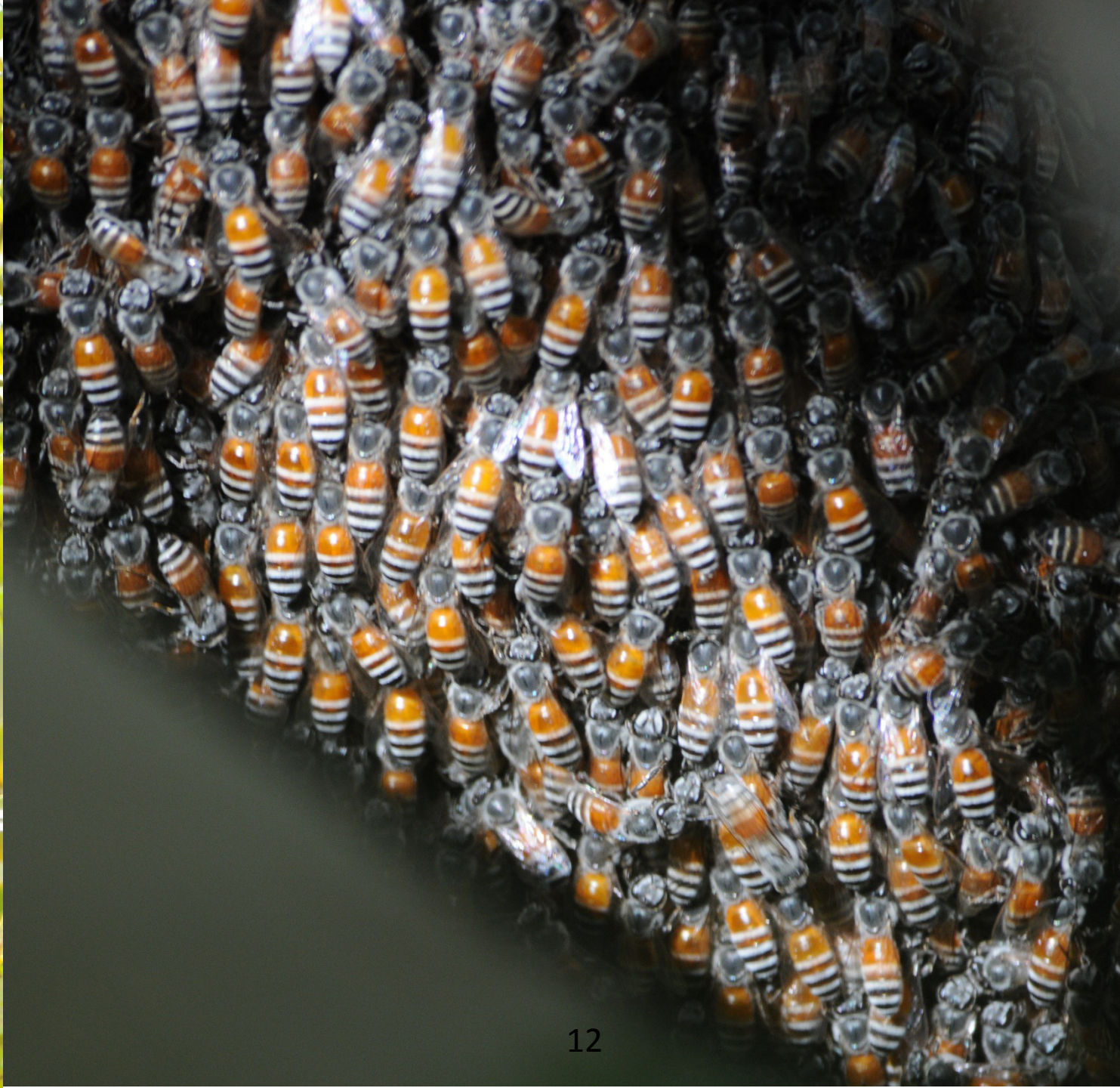
Amour maternel ?

RETROUVER LE NORD : MIGRATIONS



A large flock of birds, possibly terns, is captured in flight against a cloudy, overcast sky. The birds are silhouetted against the lighter background, creating a sense of movement and collective action. They are scattered across the entire frame, with some in the foreground and others further away, suggesting a vast, open space.

VIE EN SOCIETE

















PREDATION - HARCELEMENT





PARADES























**PERDRE
LE NORD ?**







MIMETISME



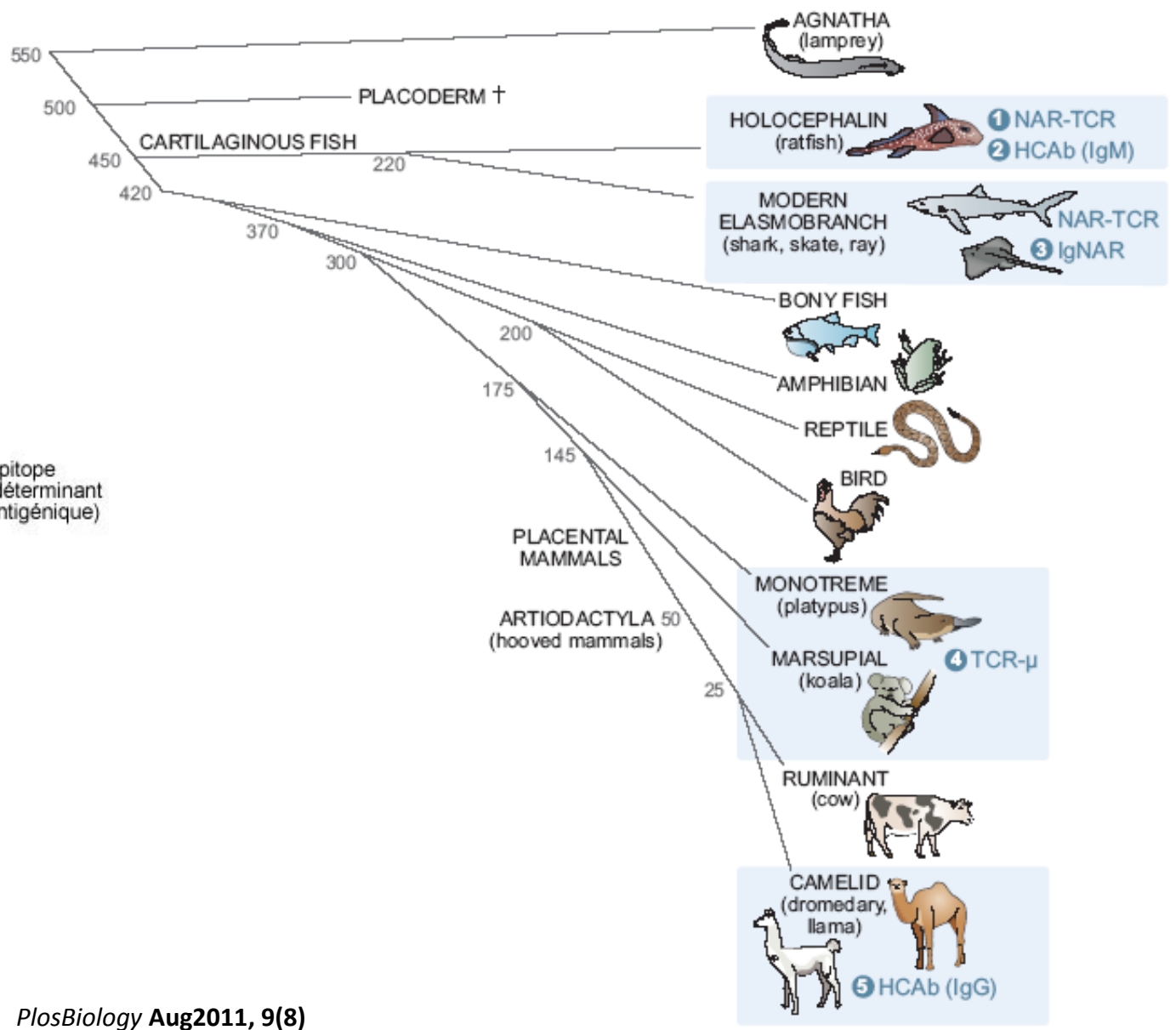
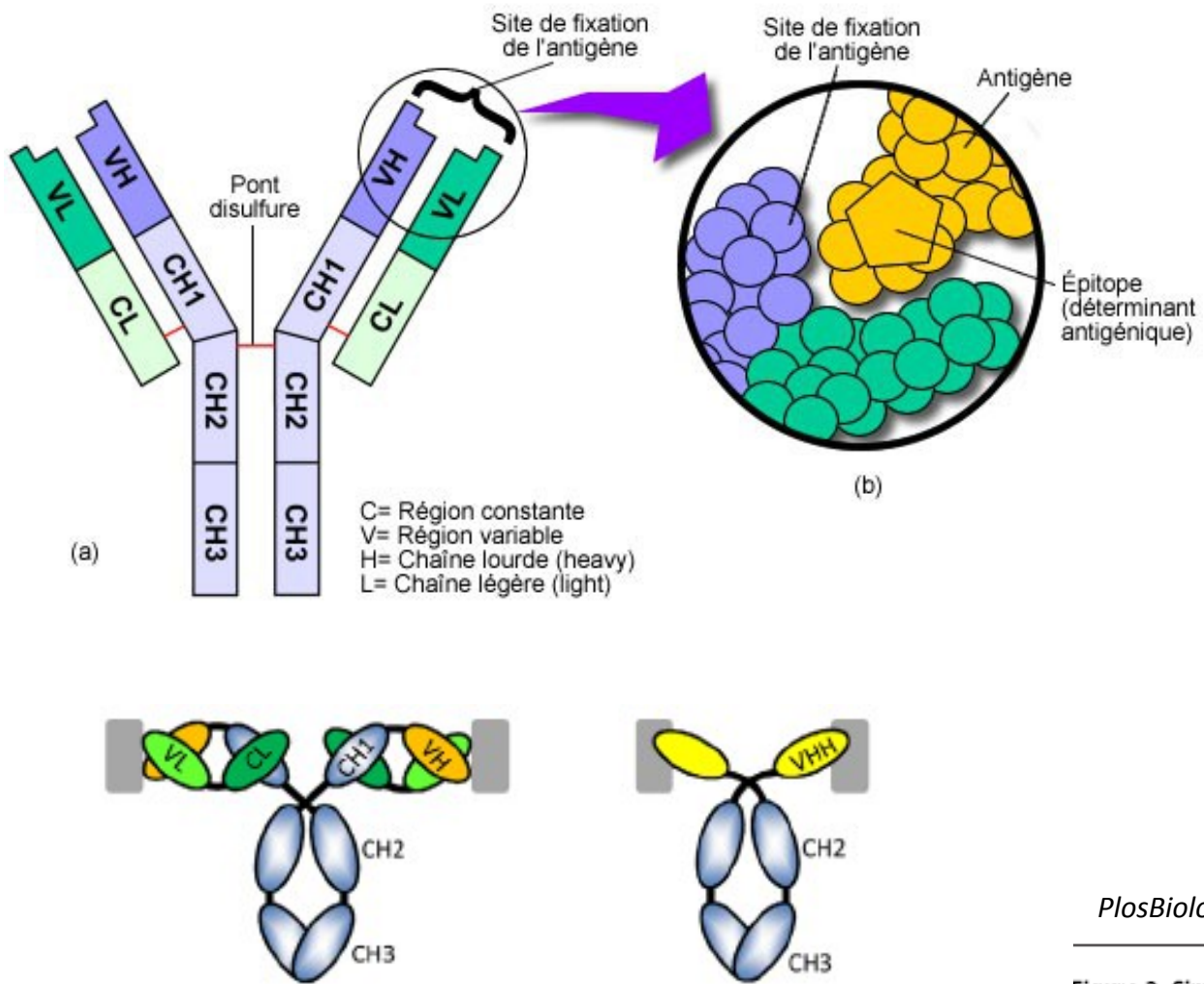


PARASITISME





REACTION ANTIGENE - ANTICORPS



PlosBiology Aug2011, 9(8)

Figure 2. Simplified vertebrate phylogenetic tree emphasizing those taxa possessing single-domain Igs or TCRs. Blue boxes display animal groups shown, or predicted, to have single-domain variable regions. There are five known single domains, at least four of which were derived by convergent evolution, holocephalin HCAb, elasmobranch IgNAR, monotreme/marsupial I μ , and camelid HCAb. The numbers on the left indicate divergence time (millions of years ago) for the various vertebrate taxa.
doi:10.1371/journal.pbio.1001120.g002







Symbiose - Vivre ensemble

